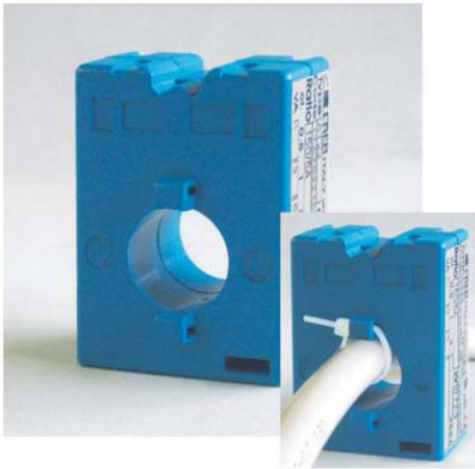


TAT22

Current Transformer 48mm Width suitable for HRC-Fuse-Load-Switches Size 00 (160A) to Size 3 (630A)

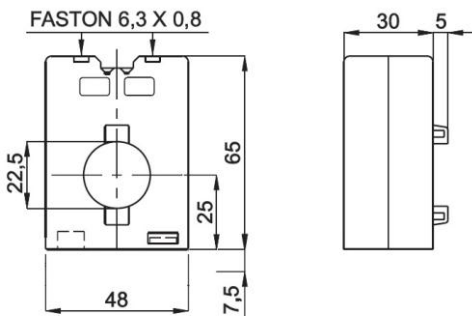
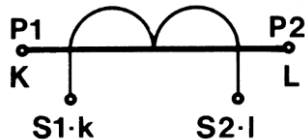


TECHNICAL DATA

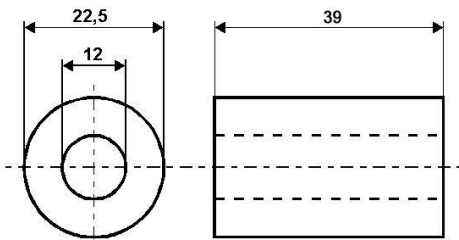
break-proof plastic housing with
integrated terminal cover
self-extinguishing
secondary connection

insulation
protection
frequency
current limiting factor
thermal short-term current
dynamic short-term current
storage temperature
operating temperature
weight

UL94-V0
flat plug socket
6,3x0,8mm (top side)
class E
IP 20
50...60Hz
FS 5
 $I_{th}=40I_n$
 $I_{dyn}=2,5 \times I_{th}$
-40...+80°C
-25...+50°C
0,15...0,20kg



copper bushing



Order Code	sec. 5A primary	burden class 0,5	burden class 1,0	burden class 3,0
TAT022060-05	60A			1,5VA
TAT022080-05	80A			2,5VA
TAT022100-05	100A		1,5VA	3,0VA
TAT022150-05	150A		3,0VA	5,0VA
TAT022200-05	200A			2,0VA
TAT022250-05	250A		1,5VA	3,0VA
TAT022300-05	300A		2,0VA	4,0VA
TAT022400-05	400A	1,5VA	3,0VA	5,0VA
TAT022500-05	500A	2,0VA	4,0VA	6,0VA
TAT022600-05	600A	2,5VA	5,0VA	7,0VA

Order Code	sec. 1A primary	burden class 0,5	burden class 1,0	burden class 3,0
TAT022060-01	60A			1,5VA
TAT022080-01	80A			2,5VA
TAT022100-01	100A		1,5VA	3,0VA
TAT022150-01	150A		3,0VA	5,0VA
TAT022200-01	200A			2,0VA
TAT022250-01	250A		1,5VA	3,0VA
TAT022300-01	300A		2,0VA	4,0VA
TAT022400-01	400A	1,5VA	3,0VA	5,0VA
TAT022500-01	500A	2,0VA	4,0VA	6,0VA
TAT022600-01	600A	2,5VA	5,0VA	7,0VA

Please note:

Additional copper bushings are necessary for mounting current transformers type TAT22 behind HRC-fuse-load-switches.

Order Code	
CU3912	copper bushing



Soyerhofstrasse 16
D-81547 Muenchen
Germany

+49-700-LANGER-01
+49-89 - 69 99 86 78
Fax +49-89 - 69 99 86 79

eMail & Internet:
info@Langer-Messtechnik.de
www.Langer-Messtechnik.de