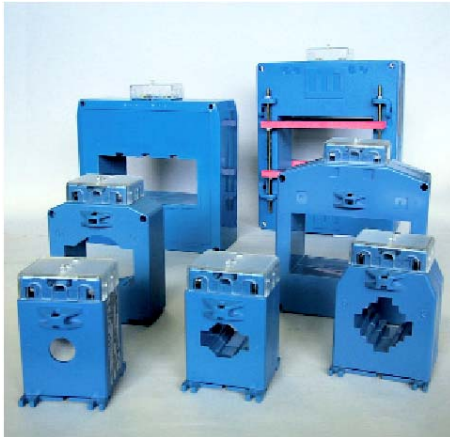


MAC../MAT..

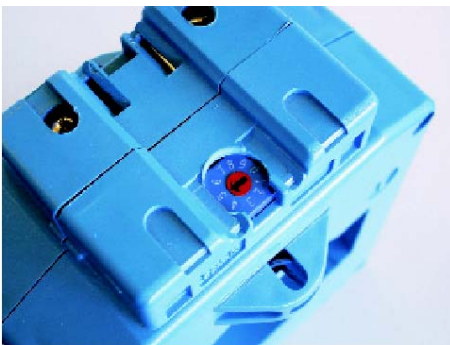
Multi-range Current Transformer with integrated Measuring Transducer Output: 4..20mA D.C.



TECHNICAL DATA

break-proof plastic housing with integrated terminal cover	UL94-V0
self-extinguishing insulation	class E
protection	IP 20
response time	< 200ms
ripple	< 1% p.p.
frequency	50...60Hz
continuous overload	1,2 In
insulation voltage	0,72 KV
test voltage	3kV-50Hz-60s
current limiting factor	FS 5
thermal short-term current	$I_{th}=60I_n$
dynamic short-term current	$I_{dyn}=2,5 \times I_{th}$
storage temperature	-40...+80°C
operating temperature	-25...+50°C
galvanic insulation	input / output
manufactured according to:	EN60044-1; EN60688

primary current	20 – 6000A AC
output	4..20mA DC
burden	100 – 1100 Ω
auxiliary voltage	12..32V DC



Description

Multi-range current transformer with passive 4..20mA DC output provide a DC current output which is directly proportional to the primary current. There is no add-on module necessary.

Different primary current values can be adjusted with a build-in rotary switch. This means, only a few transducers are necessary to cover the range from 20A up to 6000A primary current.

TRMS

This type is also available as TRMS-version.

Langer
MESSTECHNIK

Soyerhofstrasse 16
D-81547 Muenchen
Germany

☎ +49-700-LANGER-01
☎ +49-89 - 69 99 86 78
Fax +49-89 - 69 99 86 79

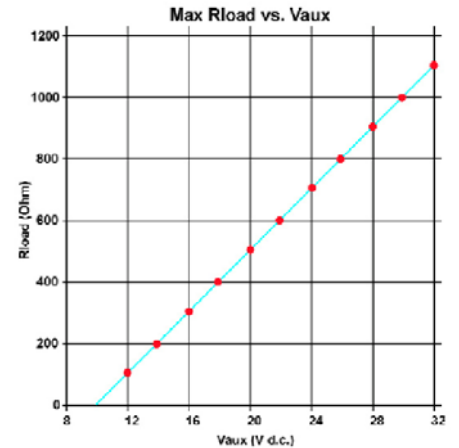
eMail & Internet:
info@Langer-Messtechnik.de
www.Langer-Messtechnik.de

MAC../MAT.. Multi-range Current Transformer with integrated Measuring Transducer

Output: 4..20mA D.C.

Type	Cable-/ Rail Size	Primary Current / Adjustment Range
MAC017-G42	Ø 17mm 1x15x10mm	20-40-40-50-60-80-100-120A
MAC032-G42	Ø 24mm 1x30x10mm	50-75-100-125-150-200-250-300A
MAC040-G42	Ø 32mm 1x40x10mm	100-150-200-250-300-400-500-600A
MAT061-G42	Ø 51mm 2x60x10mm	200-300-400-500-600-800-1000-1200A
MAT101-G42	3x100x10mm	400-600-800-1000-1200-1600-2000-2400A
MAT127-G42	3x120x10mm	500-750-1000-1250-1500-2000-2500-3000A
MAT128-G42	4x120x10mm	1000-1500-2000-2500-3000-4000-5000-6000A
MAT129-G42	5x120x10mm	1000-1500-2000-2500-3000-4000-5000-6000A
MAT165-G42	6x160x10mm	1000-1500-2000-2500-3000-4000-5000-6000A
MAT225-G42	6x220x10mm	1000-1500-2000-2500-3000-4000-5000-6000A

burden according to auxiliary voltage (12..32V DC):



Type / Code

MAC017-G42
 MAC032-G42
 MAC040-G42
 MAT061-G42
 MAT101-G42
 MAT127-G42
 MAT128-G42
 MAT129-G42
 MAT165-G42
 MAT225-G42

For dimensions please refer to page...

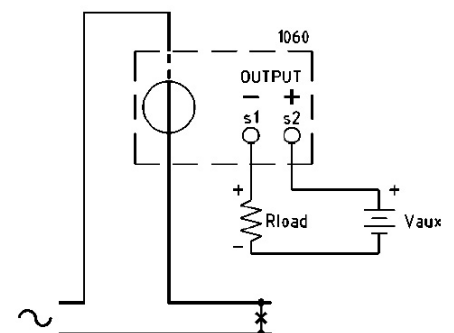
page 65 (identical to TAC17)
 page 67 (identical to TAC32)
 page 69 (identical to TAC40)
 page 71 (identical to TAT61)
 page 74 (identical to TAT101)
 page 76 (identical to TAT127)
 page 77 (identical to TAT128)
 page 78 (identical to TAT129)
 page 79 (identical to TAT165)
 page 80 (identical to TAT225)

Order Code for TRMS-type: „xxx-R42“ instead of „xxx-G42“

Order Information

- Order Code

wiring diagram:



Langer
MESSTECHNIK

Soyerhofstrasse 16
 D-81547 Muenchen
 Germany

☎ +49-700-LANGER-01
 ☎ +49-89 - 69 99 86 78
 Fax +49-89 - 69 99 86 79

eMail & Internet:
 info@Langer-Messtechnik.de
 www.Langer-Messtechnik.de

MAC../MAT..

Multi-range Current Transformer with integrated Measuring Transducer Output: 4..20mA D.C.

<p>MAC017</p>	
<p>MAC032</p>	
<p>MAC040</p>	
<p>MAT061</p>	
<p>MAT101</p>	



Soyerhofstrasse 16
D-81547 Muenchen
Germany

☎ +49-700-LANGER-01
☎ +49-89 - 69 99 86 78
Fax +49-89 - 69 99 86 79

eMail & Internet:
info@Langer-Messtechnik.de
www.Langer-Messtechnik.de

MAC../MAT..

Multi-range Current Transformer with integrated Measuring Transducer

Output: 4..20mA D.C.

<p>MAT127</p>	
<p>MAT128</p>	
<p>MAT129</p>	
<p>MAT165</p>	
<p>MAT225</p>	



Soyerhofstrasse 16
D-81547 Muenchen
Germany

+49-700-LANGER-01
+49-89 - 69 99 86 78
Fax +49-89 - 69 99 86 79

eMail & Internet:
info@Langer-Messtechnik.de
www.Langer-Messtechnik.de