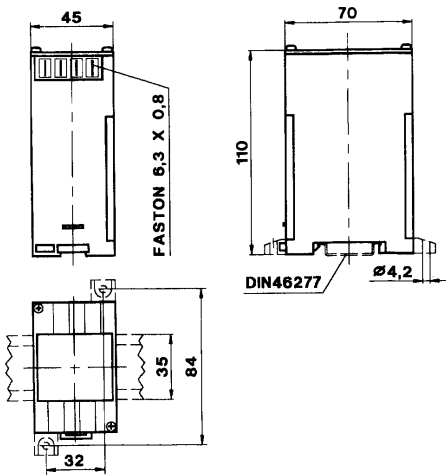
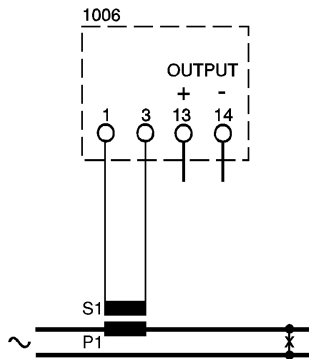


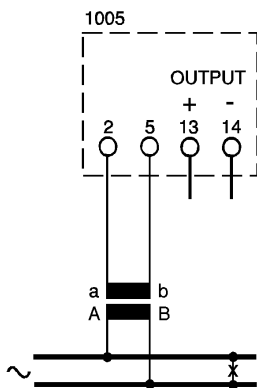
# Self-supplied AC Transducer for A.C. Current and A.C. Voltage



## MCOEA



## MCOEV



Up to 500V there is no voltage transformer necessary.

## TECHNICAL DATA

accuracy (class)	1%
frequency	50, 60 or 400 Hz
self-consumption	3VA
continuous overload	2 In; 1,2 Un
short-term overload	20 In; 2 Un
ripple	<1%
response time	<200ms
storage temperature	-30...+70°C
operating temperature	-10...+50°C
test voltage	2kV-50Hz-60s
surge test	5kV
input range	20...120%
galvanic insulation of input and output	

input A.C.	output D.C.	max. burden	Order Code
1A; 2,5A; 5A	0-5mA	2000 Ω	MCOEA
1A; 2,5A; 5A	0-10mA	1000 Ω	MCOEA
1A; 2,5A; 5A	0-20mA	500 Ω	MCOEA
1A; 2,5A; 5A	0-10V	≥ 2000 Ω	MCOEA
100-110- 230-250-400 440 or 500V	0-5mA 0-10mA 0-20mA 0-10V	2000 Ω 1000 Ω 500 Ω ≥ 2000 Ω	MCOEV MCOEV MCOEV MCOEV

These transducers are used for converting a sinusoidal A.C. current or A.C. voltage into a proportional impressed D.C. current or D.C. voltage.

There is no additional auxiliary voltage necessary.

Transmission behavior: characteristic curve A

## Order Information

- Order Code
- Primary Current or Voltage
- Frequency
- Secondary Current or Voltage

**Langer**  
MESSTECHNIK

Soyerhofstrasse 16  
D-81547 Muenchen  
Germany

☎ +49-700-LANGER-01  
☎ +49-89 - 69 99 86 78  
Fax +49-89 - 69 99 86 79

eMail & Internet:  
info@Langer-Messtechnik.de  
www.Langer-Messtechnik.de