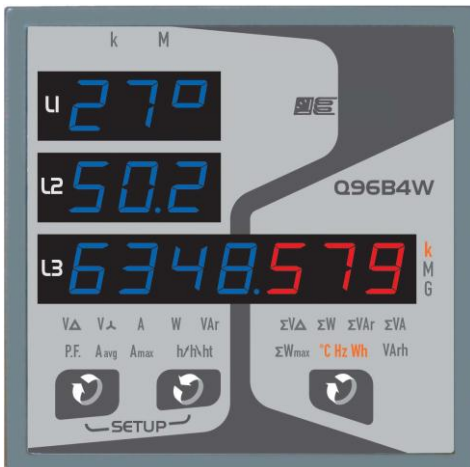


Multifunction Meter Q96D4 & Q96B4W

Q96D4



Q96B4W



TECHNICAL DATA:

accuracy (class)	1,0 ±1 digit current and voltage 2,0 ±1 digit rating and cosφ
measuring type	TRMS
display	4 x LED per 3-digits (999)
frequency	45...65Hz
input voltage	100...400V
input current	1...5A
input range	10..120% x Un; 5..120% x In
continuous overload	2In; 1,2Un
short-term overload (1sec.)	20In; 2Un
self-consumption: voltage	<0,5VA
current	<0,5VA
test voltage	2kV-50Hz-60s
surge test	5kV; 1,2/50μs
protection	IP50 front; IP20 back
operating temperature	-10...50°C
storage temperature	-30...70°C
weight	0,5 Kg

complete galvanic separation

Auxiliary voltage

standard auxiliary voltage	115 and 230V ±10% 50/60Hz (6VA)
on demand auxiliary voltage AC	24V, 48V or 400V
on demand auxiliary voltage DC	24V, 48V, 110V or 220V

Q96B4W (additional):

alarm output / pulse output	max. 100mA / 250V DC (Photo-MOS)
-----------------------------	----------------------------------

ModBus RTU

interface	RS485 (ModBus RTU)
speed (bps)	9600/19200 bps
communication parameters	1,8,N,2/1,8,E,1/1,8,O,1
addressing range	1..247 (adjustable)

ModBus TCP / Webservice

ethernet interface	IEEE 802.3(u) 10 Base T / 100 Base TX
speed	10/100 Mbit/s (auto-negotiation)
duplex	half/full (auto-negotiation)

Profibus DP V0

network	NRZ asynchronous
baud rate	9,6kbit/s...12Mbit/s
addressing range	1...99 (adjustable)
manufactured according to	EN 50170

Q96B4W:

Alarm output / pulse output

Each unit is equipped with two adjustable alarm or pulse outputs. Pulse values are directly proportional with active energy and programmable. Alarm signal is available for pre-defined minimum or maximum values. A switching delay between 0 and 99 seconds may be adjusted.

Langer
MESSTECHNIK

Soyerhofstrasse 16
D-81547 Muenchen
Germany

☎ +49-700-LANGER-01
☎ +49-89 - 69 99 86 78
Fax +49-89 - 69 99 86 79

eMail & Internet:
info@Langer-Messtechnik.de
www.Langer-Messtechnik.de

Multifunction Meter Q96D4 & Q96B4W

features	Q96D4	Q96B4W
voltage phase-phase	✓	✓
voltage phase-N	✓	✓
current L1, L2, L3	✓	✓
max. average current L1, L2, L3 (15 minutes delay "bimetallic-function")	✓	✓
active power L1, L2 and L3	✓	✓
active power total	✓	✓
max. average active power total	✓	✓
reactive power L1, L2 and L3	✓	✓
reactive power total (ind.)	✓	✓
apparent power L1, L2 and L3	✓	✓
apparent power total	✓	✓
power factor L1, L2 and L3	✓	✓
power factor total	✓	✓
frequency	✓	✓
hour of operation counter		✓
countdown timer		✓
active energy (kWh+ / kWh-)		✓
reactive energy (kvarh+ / kvarh-)		✓
programming of transformer ratios	✓	✓
ModBus RTU		✓
ModBus TCP		optional
Profibus DP V0		optional

Please note (type Q96D4 only):

- ⇒ this type is designed for current transformer measurement only (sec. 1A or 5A)
- ⇒ connection of the secondary winding to ground is not allowed!
- ⇒ direct current connection is not possible!
- ⇒ it is not allowed to connect further equipment in series to the transformer circuit

Transformer connection

Both types are designed for current transformer measurement (sec. 1A or 5A).
The voltage input connection up to 400V is direct.
For higher voltages it is necessary to use a voltage transformer.

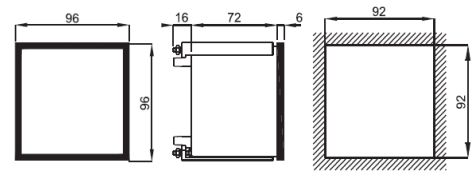
Order Code:

Q96D4

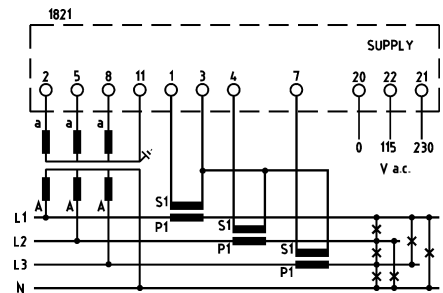
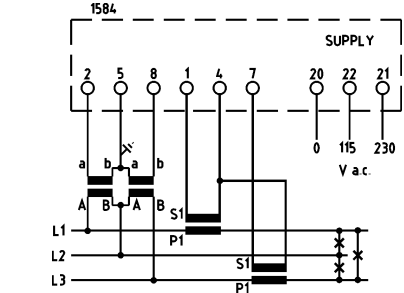
Q96B4W

Ordering Information

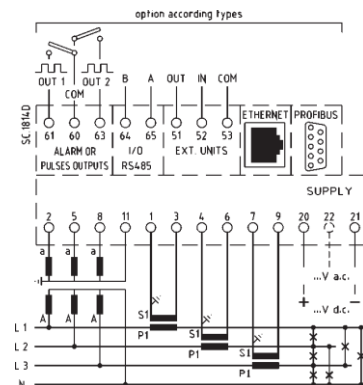
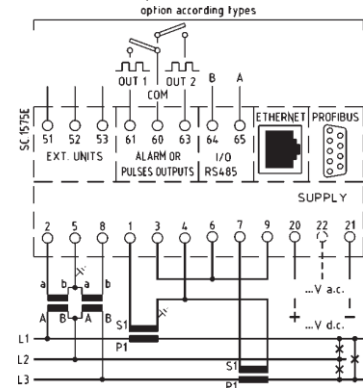
- Order Code
- Auxiliary Voltage (on demand)
- ModBus TCP or Profibus (on demand)



Q96D4



Q96B4W



Langer
MESSTECHNIK

Soyerhofstrasse 16
D-81547 Muenchen
Germany

☎ +49-700-LANGER-01
☎ +49-89 - 69 99 86 78
☎ Fax +49-89 - 69 99 86 79

eMail & Internet:
info@Langer-Messtechnik.de
www.Langer-Messtechnik.de