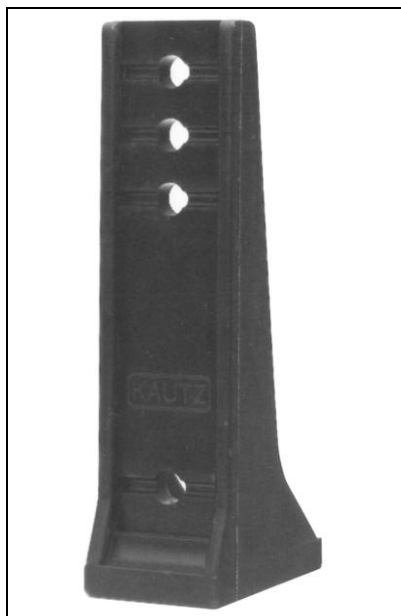
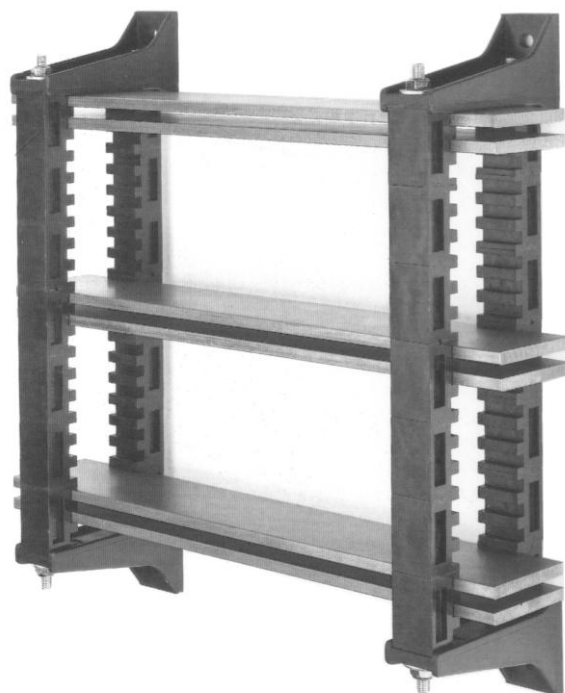


Busbar System

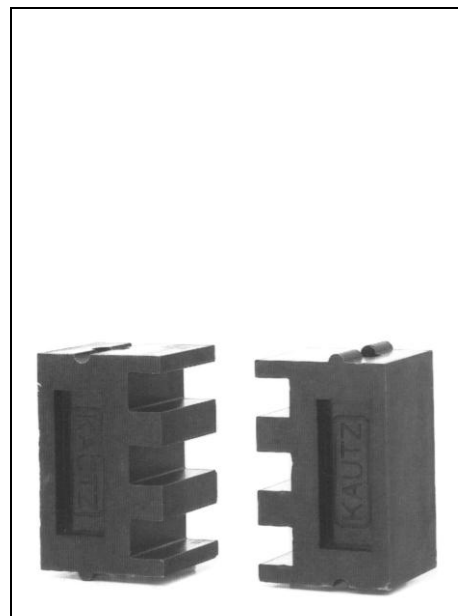
- Type-tested to DIN EN 60439-1 1994 - VDE 0660 part 500/4.94
- Rated insulation voltage 1000V/50Hz, 1200V/DC
- Bracket and support made of polyester resin with min. 18% glass fiber; self-extinguishing
- No-drilling connection technique for three-pole capability
- Different phase distances are possible



large bracket - type K60/100



small bracket - type K30/60



busbar support - type K10/10

Langer
MESSTECHNIK

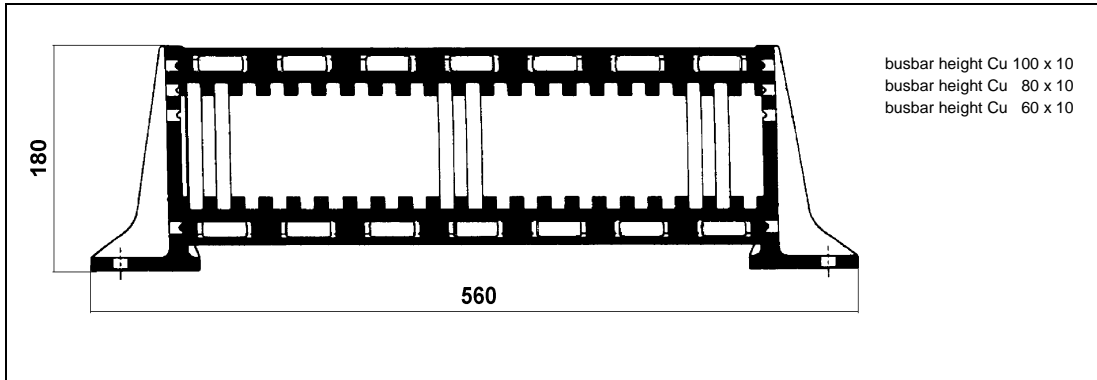
Soyerhofstrasse 16
D-81547 Muenchen
Germany

☎ +49-700-LANGER-01
☎ +49-89 - 69 99 86 78
Fax +49-89 - 69 99 86 79

eMail & Internet:
info@Langer-Messtechnik.de
www.Langer-Messtechnik.de

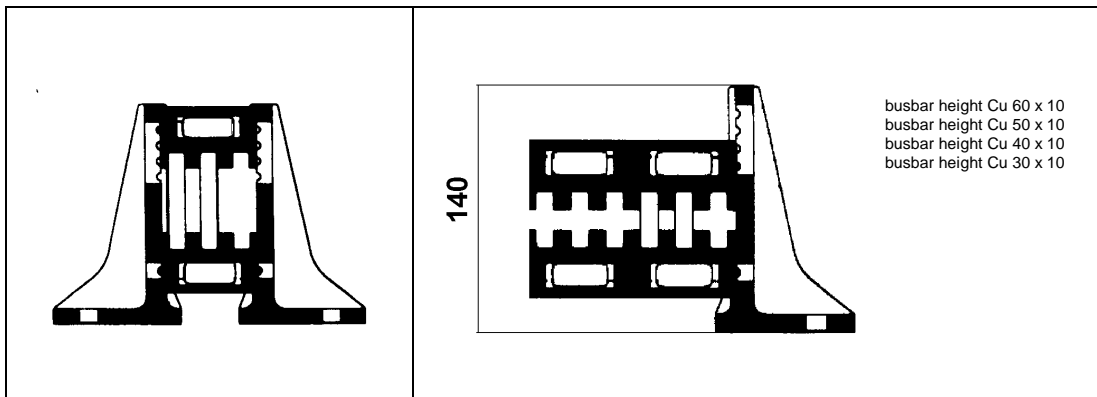
Busbar System

For busbar height 60mm - 80mm - 100mm use large bracket **K60/100**



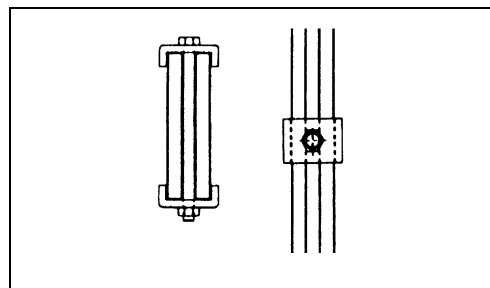
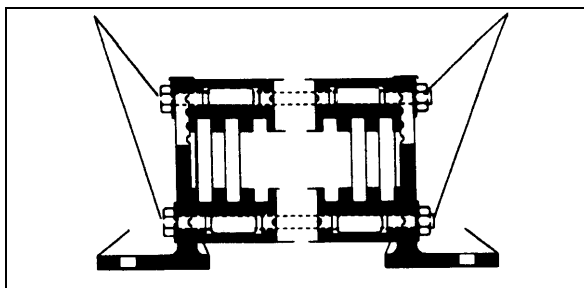
PEN-Bar

For busbar height 30mm - 40mm - 50mm - 60mm
use small bracket **K30/60**



system assembly with
self-locking nuts M10, washers
and threaded bolt
acc. to DIN ISO class 8.8

busbar stabilization



Langer
MESSTECHNIK

Soyerhofstrasse 16
D-81547 Muenchen
Germany

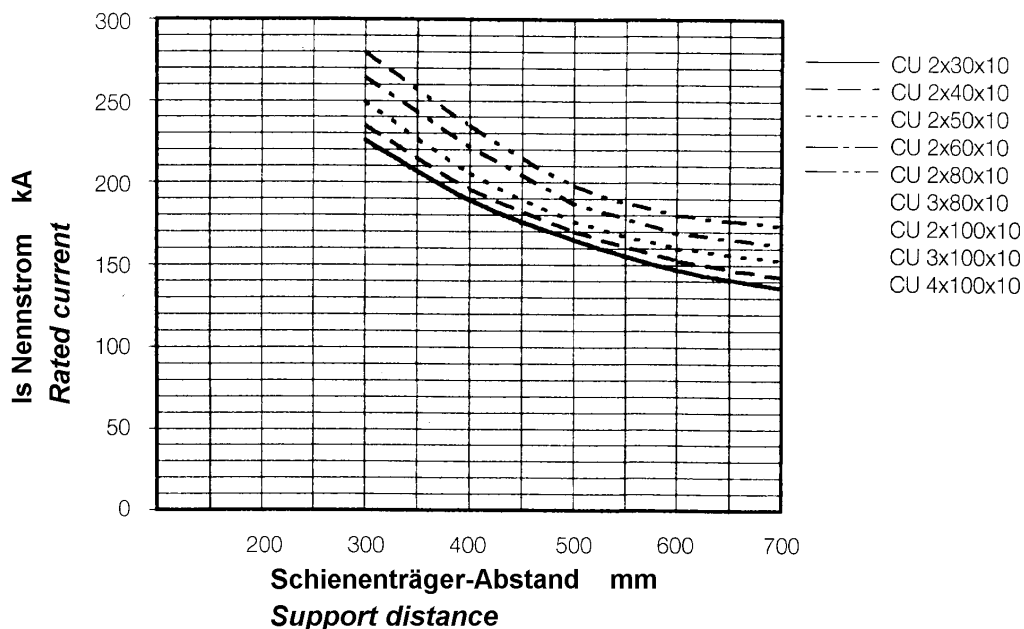
☎ +49-700-LANGER-01
☎ +49-89 - 69 99 86 78
Fax +49-89 - 69 99 86 79

eMail & Internet:
info@Langer-Messtechnik.de
www.Langer-Messtechnik.de

Busbar System

SURGE CURRENT RESISTANCE					
number of bars (mm)	rated current (A)	phase distance (mm)	support distance (mm)	peak value Is (kA) 0,1s	short-term withstand current (kAeff) 1s
2 x 30 x 10	1250	180	500	165	75
2 x 40 x 10	1500	180	500	170	78
2 x 50 x 10	1800	180	500	176	80
2 x 60 x 10	2000	180	500	187	85
2 x 80 x 10	2500	180	500	198	90
3 x 80 x 10	3250	180	500	198	90
2 x 100 x 10	3000	180	500	198	90
3 x 100 x 10	4000	180	500	198	90
4 x 100 x 10	4700	180	500	198	90

Diagram for dimensioning the phase distances



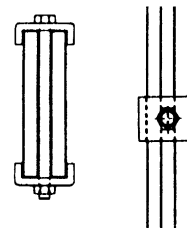
Busbar System

Basic Busbar System							
number of bars (mm)	rated current (A)	phase distance (mm)	complete system consists of:	Order Code (w/o mounting accessories)		Order Code (incl. mounting accessories)	
2x30x10	1250	180	2xK30/60+14xK10/10	K30/60-14		K30/60-14-S	
2x40x10	1500	180	2xK30/60+14xK10/10	K30/60-14		K30/60-14-S	
2x50x10	1800	180	2xK30/60+14xK10/10	K30/60-14		K30/60-14-S	
2x60x10	2000	180	2xK30/60+14xK10/10	K30/60-14		K30/60-14-S	
2x60x10	2000	180	2xK60/100+14xK10/10	K60/100-14		K60/100-14-S	
2x80x10	2500	180	2xK60/100+14xK10/10	K60/100-14		K60/100-14-S	
3x80x10	3250	180	2xK60/100+14xK10/10	K60/100-14		K60/100-14-S	
2x100x10	3000	180	2xK60/100+14xK10/10	K60/100-14		K60/100-14-S	
3x100x10	4000	180	2xK60/100+14xK10/10	K60/100-14		K60/100-14-S	
4x100x10	4700	180	2xK60/100+16xK10/10	K60/100-16		K60/100-16-S	

PEN - Bar			
complete system consists of:	Order Code (w/o mounting accessories)		Order Code (incl. mounting accessories)
2xK30/60+2xK10/10	K30/60-2		K30/60-2-S
2xK60/100+2xK10/10	K60/100-2		K60/100-2-S


Busbar Stabilization

If there are no devices mounted on the bus bar system, additional bus bar stabilization every 200mm is required for short-circuiting protection.



Individual / Spare Parts:

Article Description:	Order Code:
small bracket	K30/60
large bracket	K60/100
busbar support	K10/10
hook head nut M10 (100 pieces per packaging unit)	HKM10
hook head nut M8 (100 pieces per packaging unit)	HKM8
busbar stabilization (w/o mounting accessories)	ST1

	Soyerhofstrasse 16 D-81547 Muenchen Germany	☎ +49-700-LANGER-01 ☎ +49-89 - 69 99 86 78 Fax +49-89 - 69 99 86 79	eMail & Internet: info@Langer-Messtechnik.de www.Langer-Messtechnik.de
---	---	---	--