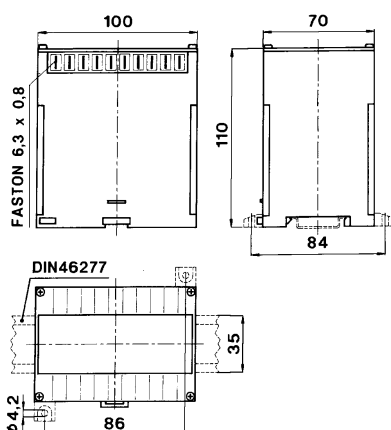
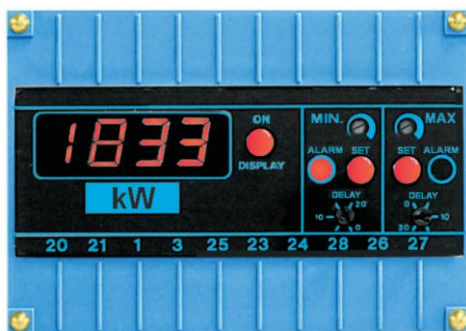
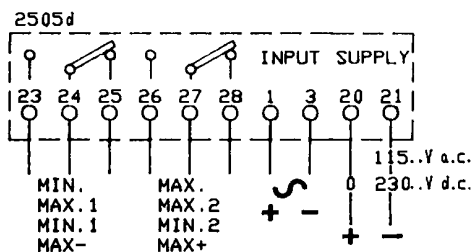
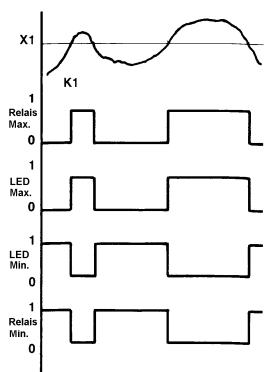


Digital Limit Value Switch with Min.-/ Max.-Contact



switching behavior



TECHNICAL DATE

Digital display device with limit value switch designed for 35mm DIN-rail
 bidirectional
 seven-segment red LED display
 digit height h=14mm
 display range max. ± 1999
 accuracy (class) 0,5 ± 1 digit
 frequency 40...400Hz
 self-consumption 5 VA
 adjustable delay 0,1...20s
 max. contact rating 5A / 230V
 overload indication first digit lights up
 continuous overload 2In; 1,2Un
 short-term overload 10In; 2Un
 test voltage 2kV-50Hz-60s
 operating temperature -10...+50°C
 storage temperature -30...+70°C
 auxiliary voltage 115 or 230V $\pm 10\%$ 50Hz
 galvanic insulation of measurement
 voltage and auxiliary voltage

measuring range	Order Code	
	1 max.	1 min.
direct voltage and direct current (d.c.)		
0-60mV	XCOMMV-X	XCOMMV-N
0-1V up to 0-600V	XCOMMV-X	XCOMMV-N
0-20mA; 4-20mA	XCOMMA-X	XCOMMA-N
0-1mA up to 0-10A	XCOMMA-X	XCOMMA-N

alternating voltage and alternating current (a.c.)		
0-1V up to 0-600V	XCOEV-X	XCOEV-N
current transformer ..5A	XCOEA-X	XCOEA-N
0-1A up to 0-10A	XCOEA-X	XCOEA-N

measuring range	Order Code		
	2 max.	1 min.	1 max. - 1 max.+
direct voltage and direct current (d.c.)			
0-60mV	XCOMMV-M	XCOMMV-H	XCOMMV-E
0-1V up to 0-600V	XCOMMV-M	XCOMMV-H	XCOMMV-E
0-20mA; 4-20mA	XCOMMA-M	XCOMMA-H	XCOMMA-E
0-1mA up to 0-10A	XCOMMA-M	XCOMMA-H	XCOMMA-E

alternating voltage and alternating current (a.c.)			
0-1V up to 0-600V	XCOEV-M	XCOEV-H	
current transformer ..5A	XCOEA-M	XCOEA-H	
0-1A up to 0-10A	XCOEA-M	XCOEA-H	

Order Information

- Order Code
- Measuring Range / Display Range
- Please state custom scale printing when ordering
- DC auxiliary voltage on demand

Langer
MESSTECHNIK

Soyerhofstrasse 16
D-81547 Muenchen
Germany

☎ +49-700-LANGER-01
☎ +49-89 - 69 99 86 78
Fax +49-89 - 69 99 86 79

eMail & Internet:
info@Langer-Messtechnik.de
www.Langer-Messtechnik.de