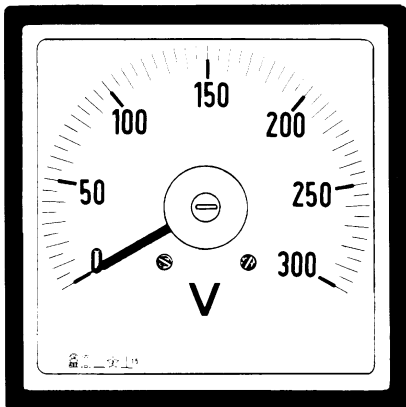


# Analog Panel Meter 240° with Moving Coil and Rectifier for Alternating Current and Voltage



## TECHNICAL DATA

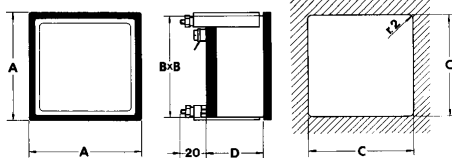
Square panel meter with moving coil and rectifier;  
240° indicator deflection; according to DIN 43 780

accuracy (class)	±1,5% DIN 43 780
self-consumption: <i>ammeters</i>	approx. 1,5VA (5A)
<i>voltmeters</i>	approx. 1VA (100V)
operating voltage	660V
operating frequency	45...65Hz (special 400Hz)
test voltage	2kV-50Hz-60s
operating temperature	-25...50°C
storage temperature	-40...80°C
manufactured according to	DIN, VDE, IEC, CEI

Input	Scale	Order Code			
		A48E	A72E	A96E	A144E
1A	1/2A				
1,5A	1,5/3A				
2,5A	2,5/5A				
4A	4/8A				
6A	6/12A				
<i>transformer</i>	<i>standard scale *)</i>				
sec. 1A	10/20A - 8/16kA				
sec. 5A	10/20A - 8/16kA				

40V	40V
60V	60V
100V	100V
150V	150V
250V	250V
400V	400V
500V	500V
600V	600V
<i>transformer</i>	<i>Standard scale *)</i>
100/110V	

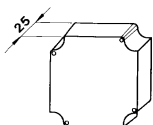
*) <i>standard scale</i>	10A	15A	20A	25A	30A	40A	50A	60A	80A	100A
	1kV	1,5kV	2kV	2,5kV	3kV	4kV	5kV	6kV	8kV	10kV
	and their decimal multiple									
	Overload scale for moving coil and rectifier are 100%:									
	20A	30A	40A	50A	60A	80A	100A	120A	160A	200A



### dimensions and weight

	A48E	A72E	A96E	A144E
<i>A/mm</i>	48	72	96	144
<i>B/mm</i>	44	67	91	137
<i>C/mm</i>	45	68	92	138
<i>D/mm</i>	46	46	46	50
<i>kg</i>	0,200	0,250	0,300	0,550

terminal cover



## Ordering Information

- Order Code
- Measurement Range and Standard Scale
- Special scale realizations are possible;  
please inform us about the labeling

**Langer**  
MESSTECHNIK

Soyerhofstrasse 16  
D-81547 Muenchen  
Germany

☎ +49-700-LANGER-01  
☎ +49-89 - 69 99 86 78  
Fax +49-89 - 69 99 86 79

eMail & Internet:  
info@Langer-Messtechnik.de  
www.Langer-Messtechnik.de