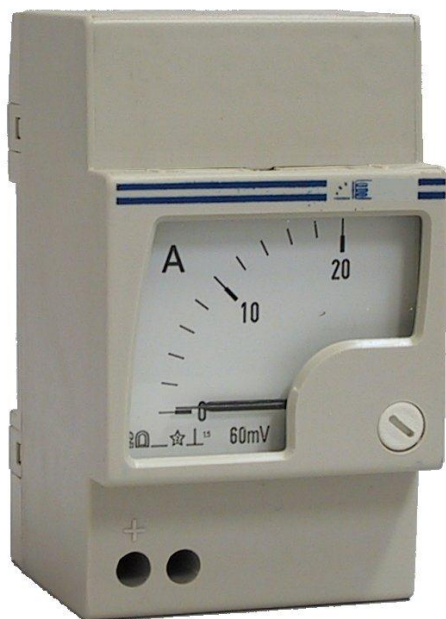
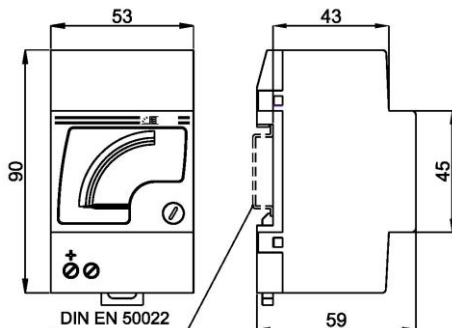
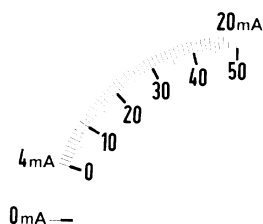


# DIN rail meter with moving coil for Direct Current and Voltage



<sup>1)</sup> scale marked from 4..20mA and blank from 0..4mA



## TECHNICAL DATA

### DIN rail meter with moving coil (35mm)

accuracy (class)	±1,5% (DIN 43 780)
self-consumption: <i>ammeters</i>	approx. 60mV (10mA..60A)
<i>voltmeters</i>	approx. 1mA (1000Ω/V)
operating voltage	600V
test voltage	2kV-50Hz-60s
operating temperature	-25...50°C
storage temperature	-40...80°C
protection frontal	IP50
protection circuit points	IP20
weight	approx. 0,15kg
manufactured according to	DIN, VDE, IEC, CEI

Input	Scale	52M
100-150μA 250-400-600μA	100-150μA 250-400-600μA	
1-1,5-2,5-4-5-6mA 10-15-20-25-40mA 60-100-150-250mA 400-600mA	1-1,5-2,5-4-6mA 10-15-20-25-40mA 60-100-150-250mA 400-600mA	
0..4..20mA <sup>1)</sup>	<i>standard scales *)</i>	
1-1,5-2,5-4-6A 10-15-25A	1-1,5-2,5-4-6A 10-15-25A	
shunt 60mV	<i>standard scales **)</i>	
400-600mV	400-600mV	
1-1,5-2,5V 4-6-10V	1-1,5-2,5V 4-6-10V	
15-25-40-60V 100-150-250V 400-500-600V	15-25-40-60V 100-150-250V 400-500-600V	

\*) *standard-scales* 10 1,5 2 2,5 3 4 5 6 8 10  
 \*\*) *standard scales* 10A 15A 20A 25A 30A 40A 50A 60A 80A 100A  
 and their decimal multiple

## Ordering Information

- Order Code (52M)
- Measurement Range and Standard Scale
- Special scale realizations are possible;  
please inform us about the labeling

**Langer**  
MESSTECHNIK

Soyerhofstrasse 16  
D-81547 Muenchen  
Germany

☎ +49-700-LANGER-01  
☎ +49-89 - 69 99 86 78  
Fax +49-89 - 69 99 86 79

eMail & Internet:  
info@Langer-Messtechnik.de  
www.Langer-Messtechnik.de