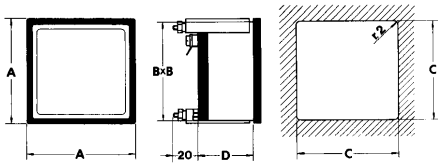
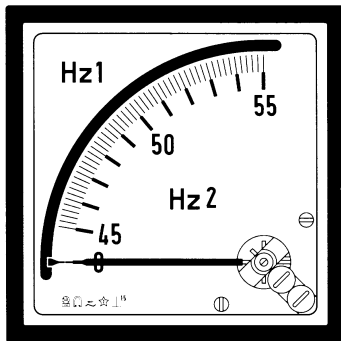
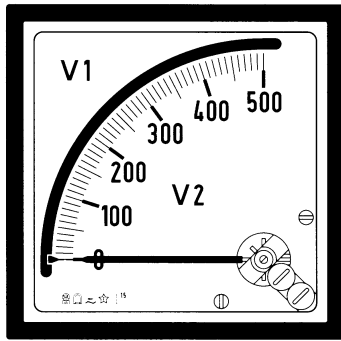
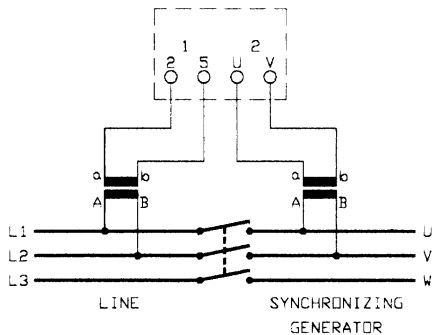


# Panel Double Voltmeter 90° Panel Double Frequency Meter 90°



dimensions und weight					
Type	A/mm	B/mm	C/mm	D/mm	kg
96V2	96	91	92	70	0,45
144V2	144	137	138	70	0,80
96F2	96	91	92	70	0,50
144F2	144	137	138	70	0,80

**Wiring diagram for  
double voltmeter and  
double frequency meter:**



## TECHNICAL DATA

**Square panel double voltmeter and frequency meter.  
90° indicator deflection.**

self-consumption (double voltmeter)	1,5VA
self-consumption (frequency meter)	1,5VA
operating frequency	45...65Hz (special 400Hz)
accuracy (double voltmeter)	1,5%
accuracy (frequency meter)	0,5%
test voltage	2kV-50Hz-60s
operating temperature	-25...50°C
storage temperature	-40...80°C
protection for housing	IP52
protection for terminals	IP00
manufactured according to	DIN, VDE, IEC, CEI

### Double Voltmeter

Input	Scale	Order Code	
		96V2	144V2
100V AC	transformer		
115V AC	transformer		
230V AC	300V		
380V AC	500V		
440V AC	600V		

### Double Frequency Meter

Input	Scale	Order Code	
		96F2	144F2
100V AC	45...55Hz		
115V AC	or		
230V AC	55...65Hz		
380V AC	or		
440V AC	360...440Hz		

## Ordering Information

- Order Code
- Input Voltage
- Frequency Range
- Special scale realizations are possible;  
please inform us about the labeling

**Langer**  
MESSTECHNIK

Soyerhofstrasse 16  
D-81547 Muenchen  
Germany

☎ +49-700-LANGER-01  
☎ +49-89 - 69 99 86 78  
Fax +49-89 - 69 99 86 79

eMail & Internet:  
info@Langer-Messtechnik.de  
www.Langer-Messtechnik.de