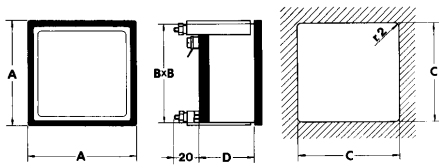


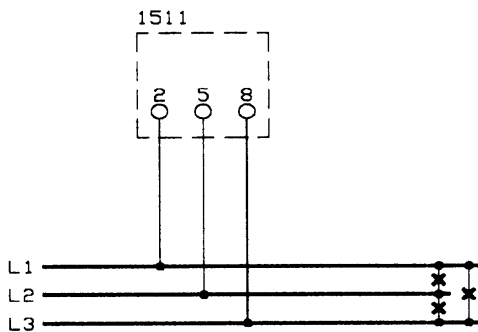
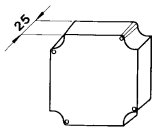
# Phase Sequence Meter



dimensions and weight

	72SE	96SE	144SE
A/mm	72	96	144
B/mm	67	91	137
C/mm	68	92	138
D/mm	46	46	46
kg	0,100	0,190	0,280

terminal cover



## TECHNICAL DATA

Square phase sequence meter according to DIN 43 780

accuracy (class)	±1,5% (DIN 43 780)
display	light symbols
self-consumption	approx. 1VA
operating voltage	660V
test voltage	2kV-50Hz-60s
operating temperature	-25...50°C
storage temperature	-40...80°C
manufactured according to	DIN, VDE, IEC, CEI

## Description

Correct phase sequence of a three-phase line when the clockwise arrow symbol is lighten; incorrect phase sequence when the counter clockwise arrow symbol is lighten.

The symbols L1, L2 and L3 show the presence of the corresponding line voltage when turned on. Voltage failure on a line is shown by the corresponding symbol turned off and by the two arrow symbols both turned on.

## Input

## Order Code

72SE 96SE 144SE

100/110V AC

230V AC

400/440V AC

*Special voltage realizations on request*

## Ordering Information

- Order Code
- Measurement Range

**Langer**  
MESSTECHNIK

Soyerhofstrasse 16  
D-81547 Muenchen  
Germany

☎ +49-700-LANGER-01  
☎ +49-89 - 69 99 86 78  
☎ +49-89 - 69 99 86 79

eMail & Internet:  
info@Langer-Messtechnik.de  
www.Langer-Messtechnik.de