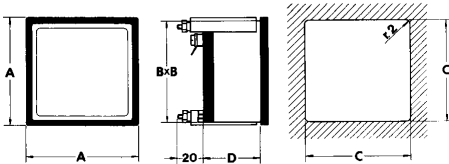
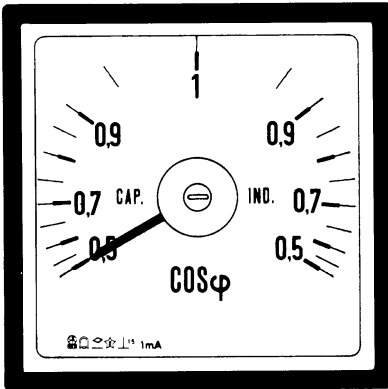
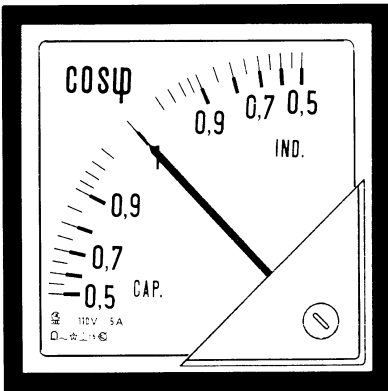


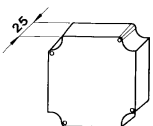
# Panel Power Factor Meter 90°/240° with External Transducer



### dimensions and weight

	(A)48P.	(A)72P.	(A)96P.	(A)144P
A/mm	48	72	96	144
B/mm	44	67	91	137
C/mm	45	68	92	138
D/mm	46	46	46	50
kg	0,150	0,180	0,200	0,450

terminal cover



## TECHNICAL DATA

**Square panel power factor meter with external transducer, 90° and 240° indicator deflection; according to DIN 43 780**

accuracy (class)	±1,5% (DIN 43 780)
self-consumption: <i>current</i>	approx. 0,5VA (5A)
<i>voltage</i>	approx. 3VA (100V)
operating frequency	45...65Hz
voltage tolerance	±20% Un
current tolerance	5...120% In
operating voltage	660V
test voltage	2kV-50Hz-60s
operating temperature	-25...50°C
storage temperature	-40...80°C
manufactured according to	DIN, VDE, IEC, CEI

Power factor meter are used to show the proportion between active and reactive power in three-phase systems or similar systems.

**Input Current:** 1A or 5A (current transformer)

**Input Voltage:** 100/110V, 230V, 400V or 440V

### Power factor meter for single-phase:

90° indicator deflection: 48PS \* 72PS 96PS 144PS

240° indicator deflection: A48PS \* A72PS A96PS A144PS

### Power factor meter for three-phase three-wires balanced load:

90° indicator deflection: 48PY \* 72PY 96PY 144PY

240° indicator deflection: A48PY \* A72PY A96PY A144PY

\*) types with external transducer

**Standard realization of cosφ-meter scale: CAP. 0,5...1...0,5 IND.**

**Special realization (on request): CAP. 0,8...1...0,2 IND.**

## Ordering Information

- Order Code
- Current Transformer, Input Voltage and Scale
- Special scale realizations are possible; please inform us about the labeling

**Langer**  
MESSTECHNIK

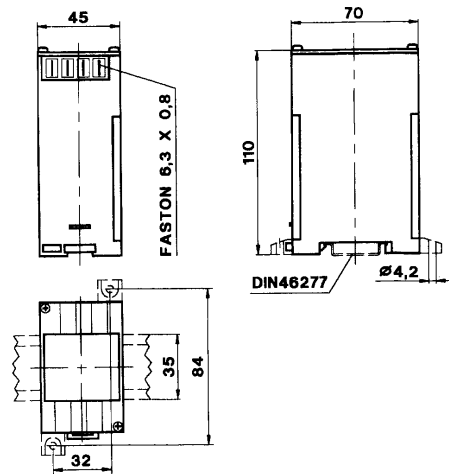
Soyerhofstrasse 16  
D-81547 Muenchen  
Germany

☎ +49-700-LANGER-01  
☎ +49-89 - 69 99 86 78  
Fax +49-89 - 69 99 86 79

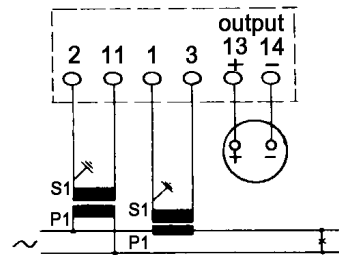
eMail & Internet:  
info@Langer-Messtechnik.de  
www.Langer-Messtechnik.de

# Wiring Diagrams for Power Factor Meter

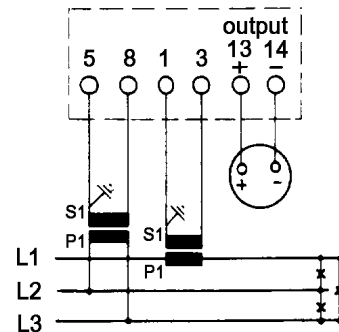
dimension of transducer  
48PS – A48PS – 48PY – A48PY:



power factor meter for single phase:



power factor meter for  
three-phase three-wires balanced load



**UP TO 440V THERE IS NO VOLTAGE TRANSFORMER NECESSARY!**

**Langer**  
MESSTECHNIK

Soyerhofstrasse 16  
D-81547 Muenchen  
Germany

☎ +49-700-LANGER-01  
☎ +49-89 - 69 99 86 78  
Fax +49-89 - 69 99 86 79

eMail & Internet:  
info@Langer-Messtechnik.de  
www.Langer-Messtechnik.de