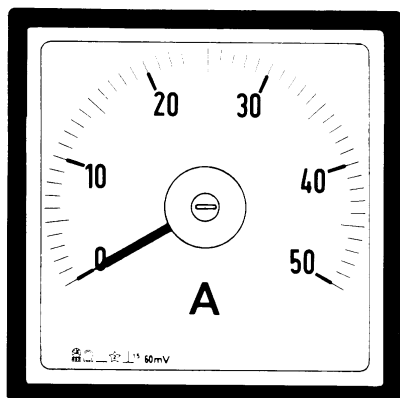
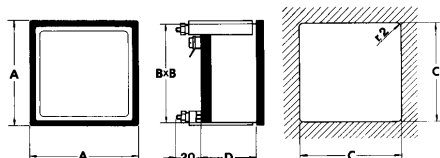
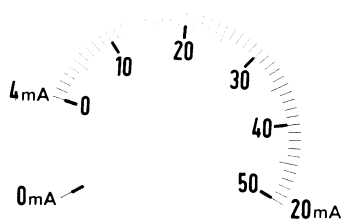


# Analog Panel Meter 240° with Moving Coil for Direct Current and Direct Voltage



1) Scale marked from 4..20mA and blank from 0..4mA:



### dimensions and weight

	A48M	A72M	A96M	A144M
A/mm	48	72	96	144
B/mm	44	67	91	137
C/mm	45	68	92	138
D/mm	46	46	46	50
kg	0,200	0,250	0,300	0,550

## TECHNICAL DATA

Square panel meter with moving coil;  
240° indicator deflection; according to DIN 43 780

accuracy (class)	±1,5% (DIN 43 780)
self-consumption: <i>ammeters</i>	approx. 60mV (10mA...60A)
<i>voltmeters</i>	approx. 1mA (1000Ω/V)
operating voltage	660V
test voltage	2kV-50Hz-60s
operating temperature	-25...50°C
storage temperature	-40...80°C
manufactured according to	DIN, VDE, IEC, CEI

Input	Scale	Order Code
<i>A48M A72M A96M A144M</i>		
250-400-600μA	250-400-600μA	
1-1,5-2,5-4-6mA	1-1,5-2,5-4-6mA	
10-15-20-25-40	10-15-20-25-40	
60-100-150-250	60-100-150-250	
400-600mA	400-600mA	
0..4..20mA <sup>1)</sup>	<i>standard scales *)</i>	
1-1,5-2,5-4-6A	1-1,5-2,5-4-6A	
<i>shunt</i>		
60mV	<i>standard scales **)</i>	
150mV	<i>standard scales **)</i>	
300mV	<i>standard scales **)</i>	
400-600mV	400-600mV	
1-1,5-2,5V	1-1,5-2,5V	
4-6-10V	4-6-10V	
15-25-40-60V	15-25-40-60V	
100-150-250V	100-150-250V	
400-500-600V	400-500-600V	
<i>*) standard scales</i>	1 1,5 2 2,5 3 4 5 6 8 10	
<i>**) standard scales</i>	10A 15A 20A 25A 30A 40A 50A 60A 80A 100A	
	and their decimal multiple	

## Ordering Information

- Order Code
- Measurement Range and Standard Scale
- Special scale realizations are possible;  
please inform us about the labeling

**Langer**  
MESSTECHNIK

Soyerhofstrasse 16  
D-81547 Muenchen  
Germany

☎ +49-700-LANGER-01  
☎ +49-89 - 69 99 86 78  
Fax +49-89 - 69 99 86 79

eMail & Internet:  
info@Langer-Messtechnik.de  
www.Langer-Messtechnik.de