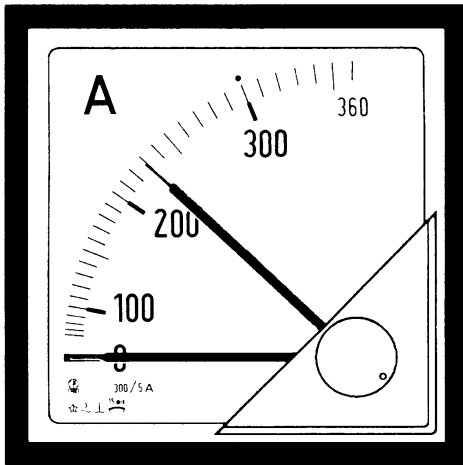


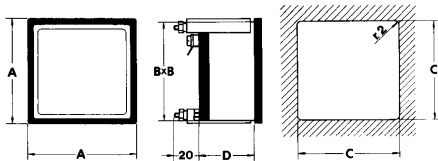
# Analog Bimetallic Panel Meter 90° for Alternating Current



## TECHNICAL DATA

**Square bimetallic panel meter;  
90° indicator deflection; according to DIN 43 780**

accuracy (class)	±3%
self-consumption	approx. 2,0VA (5A)
operating voltage	660V
delay time	8 or 15 min.
operating frequency	45...65Hz
test voltage	2kV-50Hz-60s
operating temperature	-25...50°C
storage temperature	-40...80°C
manufactured according to	DIN, VDE, IEC, CEI



### dimensions and weight

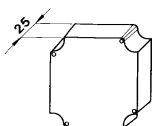
	72T	96T	144T
<i>A/mm</i>	72	96	144
<i>B/mm</i>	67	91	137
<i>C/mm</i>	68	92	138
<i>D/mm</i>	46	46	50
<b>kg</b>	0,200	0,250	0,450

Input	Scale	Order Code		
<i>transformer</i>				
sec. 1A	<i>standard scales</i>	72T	96T	144T
sec. 5A	<i>standard scales</i>	72T	96T	144T

**The following standard scales are available without an additional price:**

<b>primary current:</b>	10A 12A 15A 20A 25A 30A 40A 50A 60A 80A 100A
	and their decimal multiple
	Overload scales for bimetallic instruments are 20%:
	12A 14,4A 18A 24A 30A 36A 48A 60A 72A 96A 120A

terminal cover



## Ordering Information

- Order Code
- Delay Time 8 or 15 Minutes
- Current Transformer sec. 1A or 5A
- Standard Scale
- Special scale realizations are possible; please inform us about the labeling

**Langer**  
MESSTECHNIK

Soyerhofstrasse 16  
D-81547 Muenchen  
Germany

☎ +49-700-LANGER-01  
☎ +49-89 - 69 99 86 78  
Fax +49-89 - 69 99 86 79

eMail & Internet:  
info@Langer-Messtechnik.de  
www.Langer-Messtechnik.de