

TECHNICAL DATA

DISPLAY

| | |
|--------------------|----------|
| mechanical counter | 7-digits |
| digit height | 4mm |
| max. display | 9999999 |
| accuracy (class) | 2% |

INPUT

| | |
|----------------------------|--|
| current transformer | 5A or 1A |
| voltage input | 3 x 230V/400V (-20%; +15%) 50 or 60Hz |
| continuous overload | 1,2In; 1,15Un |
| instantaneous overload | 20In/0,5s; 2Un |
| self consumption (current) | <0,5VA (each phase) |
| (voltage) | <3VA (each phase) |
| Insulation | 2kV/50Hz (1') |

PULSE OUTPUT

| | |
|----------------|--|
| output type | Photo-MOS |
| reference norm | DIN SO 43864 |
| pulse rate | 1Imp./1Wh or 1Imp./10Wh or 1Imp./100Wh or 1Imp./1kWh or 1Imp./10kWh or 1Imp./100kWh selectable; depending on primary current |
| pulse period | ca. 100ms |
| max. voltage | max. 250V / 100mA |

NORMS

IEC 1036
IEC 255-4
IEC 801-2, class 4
IEC 801-3, class 3
IEC 801-4, class 4

ENVIRONMENTAL CONDITIONS

| | |
|-----------------------|------------|
| reference temperature | 23°C ± 2°C |
| function temperature | -20...55°C |
| storage temperature | -25...70°C |

HOUSING

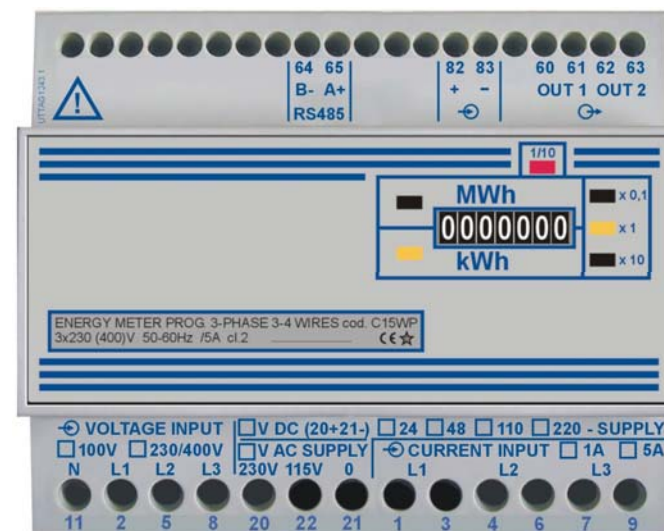
| | |
|------------|-----------------------------------|
| dimensions | 6 modules DIN 43880 (105x58x90mm) |
| fixing | DIN-rail 35mm (EN 50022) |
| protection | IP20 |
| colour | RAL 7035 |
| weight | ca. 0,35 kg |

May 2009

USER MANUAL

kWh Energy counter for four-wires three-phases unbalanced load type

C15WP



Langer
MESSTECHNIK

Langer Messtechnik
Soyerhofstrasse 16
D-81547 Muenchen

Tel. +49700LANGER01
Tel. +49-89-69998678
Fax +49-89-69998679

eMail & Internet:
info@Langer-Messtechnik.de
www.Langer-Messtechnik.de

Langer
MESSTECHNIK

Langer Messtechnik
Soyerhofstrasse 16
D-81547 Muenchen

Tel. +49700LANGER01
Tel. +49-89-69998678
Fax +49-89-69998679

eMail & Internet:
info@Langer-Messtechnik.de
www.Langer-Messtechnik.de

CURRENT TRANSFORMER

The dip switches are behind the frontal label:

(please note: the frontal label must be glue on after programming the current transformer ratio and the pulse output)

1. Current transformer ratio (Dip No. 1 ... 6):

| Primary current | Dip switch 123456 | Counter factor | Primary current | Dip switch 123456 | Counter factor | Primary current | Dip-switch 123456 | Counter factor |
|-----------------|-------------------|----------------|-----------------|-------------------|----------------|-----------------|-------------------|----------------|
| 5A | 111111 | x0,1 | 125 | 010011 | x0,1 | 1250 | 101001 | x1 |
| 10A | 011111 | x0,1 | 150 | 100011 | x0,1 | 1500 | 001001 | x1 |
| 15A | 101111 | x0,1 | 160 | 000011 | x0,1 | 1600 | 110001 | x1 |
| 20A | 001111 | x0,1 | 200 | 111101 | x0,1 | 2000 | 010001 | x1 |
| 25A | 110111 | x0,1 | 250 | 011101 | x0,1 | 2500 | 100001 | x1 |
| 30A | 010111 | x0,1 | 300 | 101101 | x1 | 3000 | 000001 | x10 |
| 40A | 100111 | x0,1 | 400 | 001101 | x1 | 4000 | 111110 | x10 |
| 50A | 000111 | x0,1 | 500 | 110101 | x1 | 5000 | 011110 | x10 |
| 60A | 111011 | x0,1 | 600 | 010101 | x1 | 6000 | 101110 | x10 |
| 75A | 011011 | x0,1 | 750 | 100101 | x1 | 7500 | 001110 | x10 |
| 80A | 101011 | x0,1 | 800 | 000101 | x1 | 8000 | 110110 | x10 |
| 100A | 001011 | x0,1 | 1000 | 111001 | x1 | 10000 | 010110 | x10 |
| 120A | 110011 | x0,1 | 1200 | 011001 | x1 | 12000 | 100110 | x10 |

(1) ON (0) OFF

The LEDs show the resolution of the mechanical counter:

1. mech. counter show kWh or MWh
2. factor for counter (x0,1 or x1 or x10)

| | | | |
|------------------------------|--|--|--|
| Langer MESSTECHNIK | Langer Messtechnik Soyerhofstrasse 16 D-81547 Muenchen | Tel. +49700LANGER01 Tel. +49-89-69998678 Fax +49-89-69998679 | eMail & Internet: info@Langer-Messtechnik.de www.Langer-Messtechnik.de |
|------------------------------|--|--|--|

PULSE OUTPUT / WIRING DIAGRAM / DIMENSION

2. Pulse ratio (Dip No. 7 and 8):

| primary current: | xxxxxx00 | xxxxxx10 | xxxxxx01 | xxxxxx11 |
|------------------|----------------|---------------|--------------|--------------|
| 5 ... 250A | 1 Imp./10KWh | 1 Imp./1KWh | 1 Imp./100Wh | 1 Imp./10Wh |
| 300 ... 2500A | 1 Imp./100KWh | 1 Imp./10KWh | 1 Imp./1KWh | 1 Imp./100Wh |
| 3000 ... 12000A | 1 Imp./1000KWh | 1 Imp./100KWh | 1 Imp./10KWh | 1 Imp./1KWh |

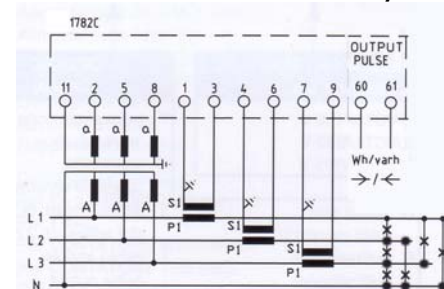
Please note: Max. 5 pulses per second are technical useful !

(1) ON (0) OFF

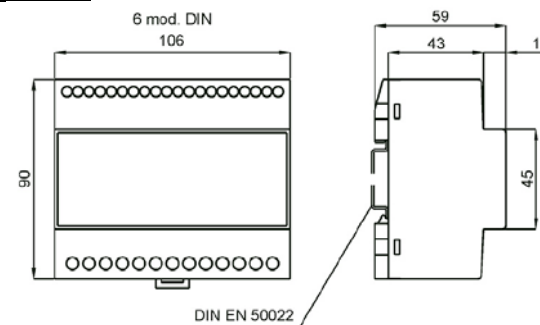
! Select current transformer and pulse ration only when line and power supply is switched off! Correct transformer polarization [K-k (P1-S1) and L-I (P2-S2)] primary and secondary is very important !

Wiring diagram of C15WP:

Up to 440V voltage transformers are not necessary !



Dimensions of C15WP:



| | | | |
|------------------------------|--|--|--|
| Langer MESSTECHNIK | Langer Messtechnik Soyerhofstrasse 16 D-81547 Muenchen | Tel. +49700LANGER01 Tel. +49-89-69998678 Fax +49-89-69998679 | eMail & Internet: info@Langer-Messtechnik.de www.Langer-Messtechnik.de |
|------------------------------|--|--|--|